

best prices & equipments. ever



**COMPASS**  
MIND OPENER  
[www.compass.com.ro](http://www.compass.com.ro)  
we simply do amazing things™

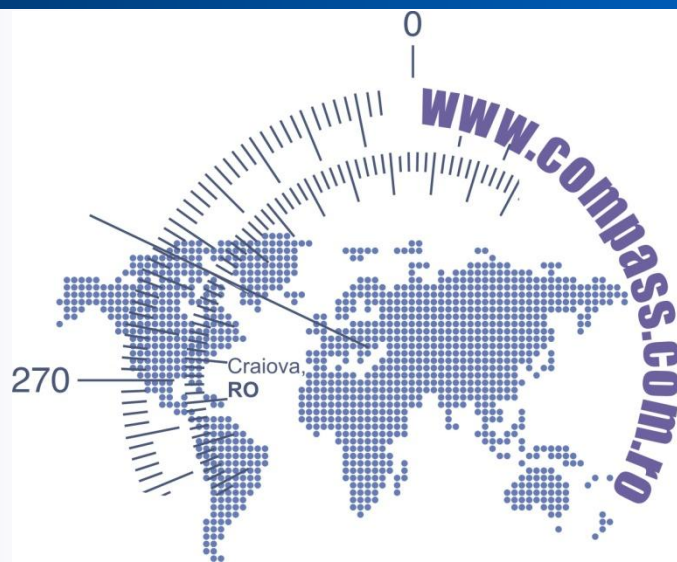
advertisingsolutions™  
echipamente si consumabile  
pentru industria publicitara

more.better.faster

# Product Introduction

## FC7000MK 2 series

- 60 / -75 / -100 / -130 / -160



# FC7000MK2 Series

## *Advanced Multi-functional Cutting Plotter Technology for Plotting, Cutting and Pouncing Applications*

Vinyl Sign

Banners

Masking Film

Sandblast Signs

Traffic Signs

Print &amp; Cut

Decals

Vehicle Graphics

### Variety of applications...



Vinyl Cut



Pounce

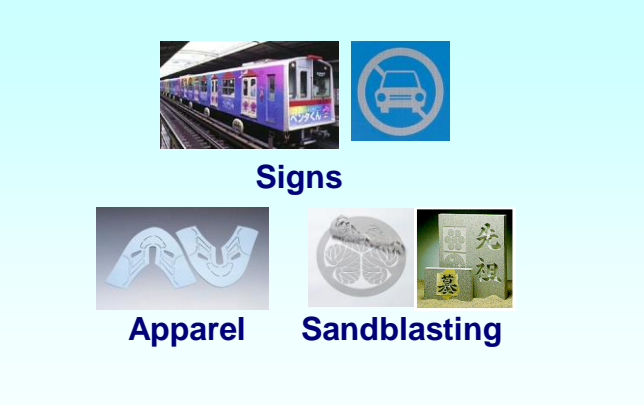
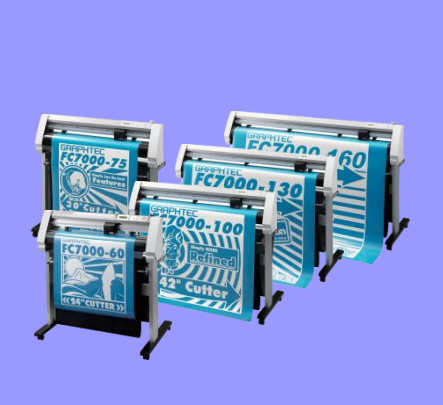
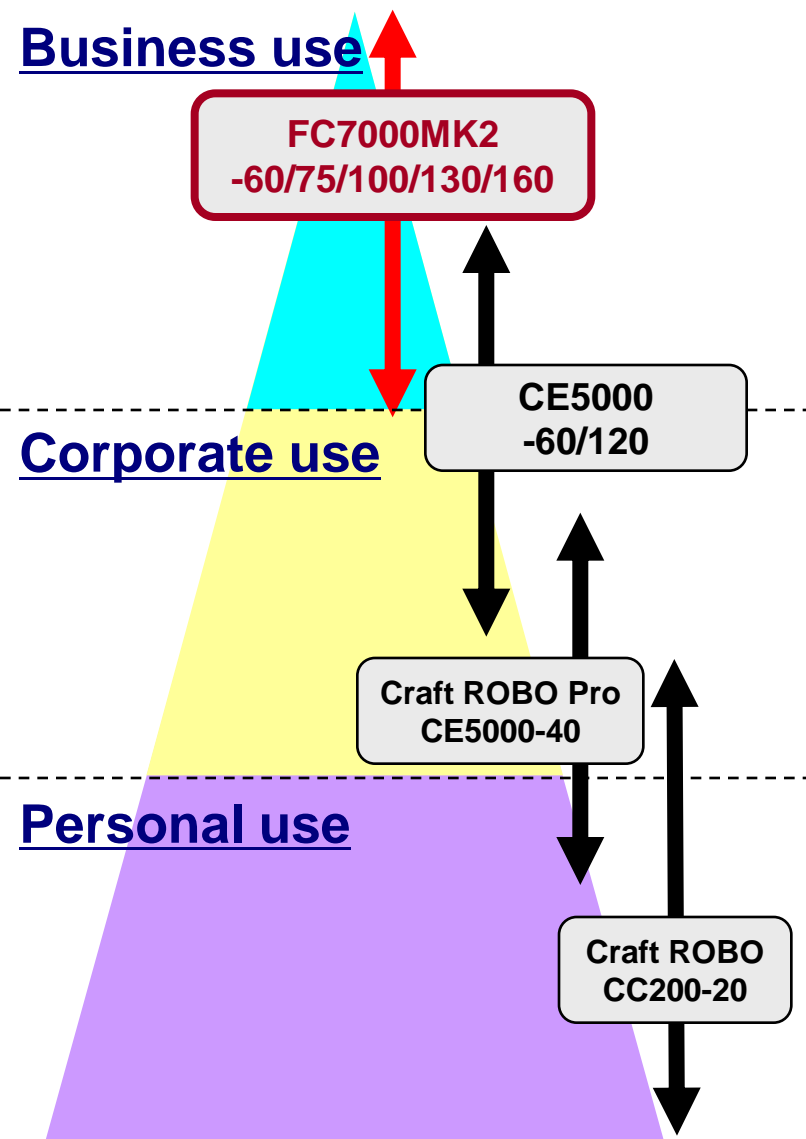


Pen Plot

The unsurpassed versatility of the FC7000MK2 series is further augmented with its capability to plot, cut and pounce without having to alter the plotter's mechanical configuration. To configure the FC7000MK2 for any job-specific setup among test plotting, cutting or pouncing paper stencil, simply install the specific tool required for the next job and select one of the eight user-programmable settings that corresponds to the type of tool (as well as any other pertinent job requirements).

Note: Pouncing operation requires purchase of optional pouncing tool.

# Grit-rolling Cutting Plotter Products



# Concept of FC7000MK2

Providing the highest performance and functionality with the most user-friendly operability

From “No.1 share” to “Overwhelming brand” share

Expand media that is able to assure 15m (50ft) tracking  
New type basket is attached as standard

New design with sense of stiffness, durability, quality,.....

A 24 inch model is added for corresponding wide range of needs

**New Size**



FC7000Mk2-60  
24 inch



FC7000Mk2-75  
30 inch



FC7000Mk2-100  
42 inch



FC7000Mk2-130  
54 inch



FC7000Mk2-160  
64inch

# Differences/added function from FC7000



- For 15m (50ft) tracking guarantee
  - Basket : Option → Standard
  - New type basket (increasing capacity)
- For management of stiffness and expensive-looking
  - Some part of design are changed
- For improvement of reliability
  - New algorithm for adjusting the cutting conditions automatically
    - The calculation program that automatically changes to the best cutting conditions according to the media width

# Target market

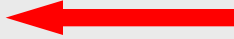
## 1. Sign Graphics market

Cutting film



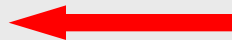
Improvement of tracking for reliable long tracking

Print & Cut



Improvement of tracking/Segment area compensation

High-intensity reflective film

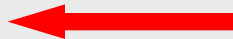


Max. Cutting force : 600 gf

→ Traffic sign

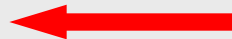
## 2. Car tinting film market

Tint film



Variable pinch roller pressure

Paint protection film



Max. Cutting force : 600 gf

## 3. Monument (Stone) market

Sand blast rubber



Max. Cutting force : 600 gf

## 4. Countertop market

Laminating material for countertop

Mainly for decoration of kitchen / reform



# *Sales talk*

## **1. Reliable long length tracking**

15m (50ft) tracking is guaranteed

Precise registration mark detection by segment area compensation

## **2. Wide range of compatible media width**

Max. cut force : 600 gf, Variable pinch roller pressure

→ From thin media to thick media

## **3. Exceptional productivity**

High speed cutting with max. 1440 mm/s

New algorithm for automatic adjustment of best cutting conditions according to the media width

Precise cutting even with small characters

## **4. Superior operability**

Plotter controller that enables to operate the plotter from PC

Plug-in software for Illustrator/CorelDraw corresponds 11 languages

## *FC7000MK2 series - Features*

Superior performance with various features

### **1. The world highest performance in its class**

All-in-one cutter head for supporting additional applications and higher productivity and reliability.

### **2. ARMS3.0**

The ARMS3.0 for the most sophisticated Print & Cut operation for the highest productivity

### **3. New functions, New design**

New functions for better productivity  
New design for better operability

### **4. Expanded software compatibility**

Illustrator, CorelDRAW plug-in driver,  
Plotter controller and Windows driver... Now all comes standard!

## *The world highest performance in its class*

All-in-one cutter head for supporting additional applications and higher productivity and reliability.

### 1. 600gf maximum cutting pressure

Highest cutting pressure in its class for cutting wider range of materials

### 2. 1485mm/s maximum cutting speed

Fastest cutting speed in its class for the highest productivity

### 3. Reliable long-length cutting capability

Strengthened body for secured media feeding



**Protection Film / Sandblast Materials / Security Film / High-intensity Reflective Film**

100B Parangului Street, 200719 Craiova, Romania. Tel : +40-351- 451932 Tel/Fax: +40-251-414170, e-mail : sales@compass.com.ro

Website <http://www.compass.com.ro>, [www.graphtecromania.ro](http://www.graphtecromania.ro), [www.craftrobo.ro](http://www.craftrobo.ro)

# ARMS3.0

## Advanced Registration Mark Sensing System

Graphtec's 3<sup>rd</sup> generation auto registration mark sensing system for superb operability and functionality



### 4-point axis alignment

Enhanced precision with 4-point axis alignment



### Area segmentation

Better accuracy in axis alignment in long-length images



### Multiple mark sensing

Sequential mark sensing for copied images in single layout



### Automatic mark origin sensing

Automatic detection of first registration mark

**Patent in processing**



### ARMS command support – *Adobe Illustrator Plug-in module*

Remote setup and control of auto registration mark sensing

# ARMS3.0 *Advanced Registration Mark Sensing System*

## 4-point axis alignment

The conventional 3-point axis alignment only provides distance adjustment and axis alignment. This new Graphtec's 4-point axis alignment offers not only all features of 3-point alignment but also adding distortion compensation. This evolutionary function offers far better accuracy in P&C operation than ever.

Mimaki also offers 4-point axis alignment, but their function only compensate distortion in trapezoid while FC7000MK2 does for both X & Y axis distortion.

New ARMS head minimize environmental effect that can cause misreading during mark sensing



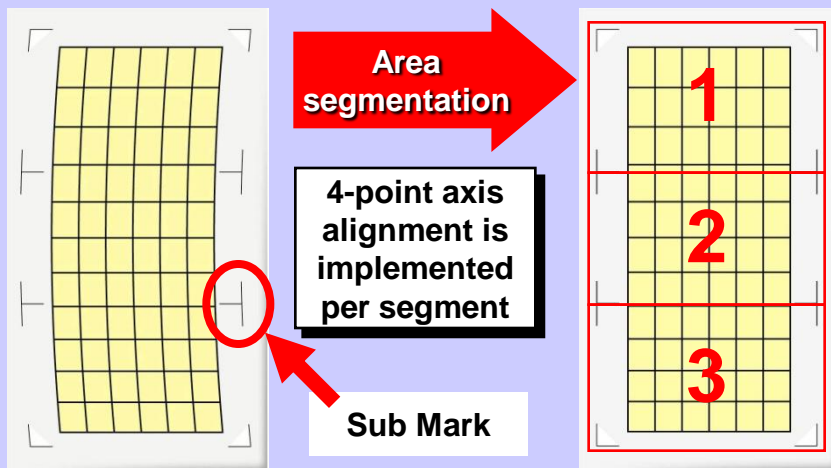
	<b>3-point</b>	
	<b>3-point adj.</b>	
	<ul style="list-style-type: none"> <li>- Axis alignment</li> <li>- Distance adj.</li> <li>- Roland offers 2 &amp; 3 point adj. only</li> </ul>	
	<b>Mimaki</b>	
	<b>4-point adj.</b>	
	<ul style="list-style-type: none"> <li>- Distortion adj. (X axis only)</li> </ul>	
	<b>Graphtec FC7000MK2</b>	
	<b>4-point adj.</b>	
	<ul style="list-style-type: none"> <li>- Distortion adj. (both X &amp; Y axis)</li> </ul>	

# ARMS3.0 *Advanced Registration Mark Sensing System*



## Area segmentation

FC7000MK2 reads additional registration marks that are positioned in specified distance in feeding direction. This function corrects distortion in each segment divided by each registration mark thus providing precise P&C result especially in long-length image.



## Multiple mark sensing

FC7000MK2 sequentially read each set of registration marks for continuous P&C operation when multiple copy images are in single layout. This new function dramatically decrease labor intensive operations thus providing higher productivity.

- Reading marks in data 1
- Contour cutting in data 1
- Reading marks in data 2
- Contour cutting in data 2
- Data 3....
- Data 4....
- Data 5....
- Reading marks in data 6
- Contour cutting in data 6
- End



# ARMS3.0 *Advanced Registration Mark Sensing System*

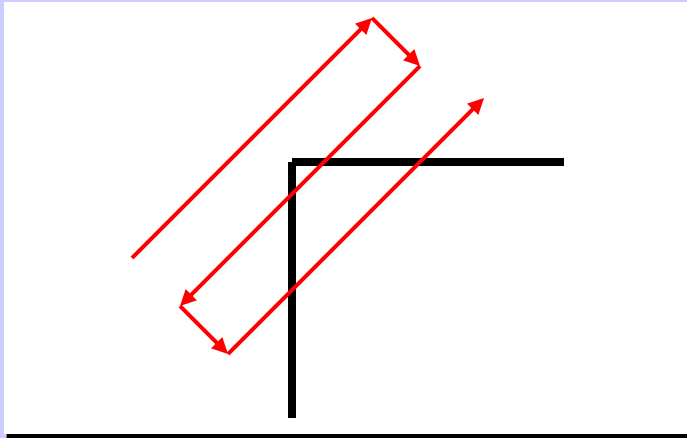


## Automatic mark origin sensing

In case of conventional step of registration mark sensing, you are required to manually position the optical sensor to the specific area in advance to the operation. FC7000MK2 automatically detects the first origin mark. This new function reduce the most time-consuming process thus providing higher productivity.

Even if an error occurs, FC7000MK2 retry reading the mark.

### Movement of mark sensor



## ARMS command support

Cutting Master (Adobe Illustrator Plug-in module, standard accessory) allows you to setup and control ARMS directly from Illustrator (ex. Mark size, Mark distance etc...) and it reflects to user-friendly operation.

### Comparison of axis alignment functionality

Function	Graphtec FC7000MK2	Mimaki	Summa
4-point axis alignment	Yes	Yes, but only trapezoid	Yes
Area segmentation	Yes	No	Yes
Multiple mark sensing	Yes	Yes	No
Automatic mark origin sensing	Yes	No	No
ARMS command support	Cutting Master Controller	Fine Cut	Controller

## *New functions for better productivity*

ARMS3.0 is just one of the new technologies integrated in FC7000MK2...there are more to talk about productivity and they are all STANDARD features!

### Automatic sheet cutter

Automatic sheet cutter provides a simple solution for obtaining a straight sheet cut-off of your finished job. You have a choice of standard cutter and heavy-duty cutter.



### Light pointer

Light pointer is used for manually detecting registration marks. It also works to trace cut images for proofing. This item was optional in FC5100A, but now it is standardized.



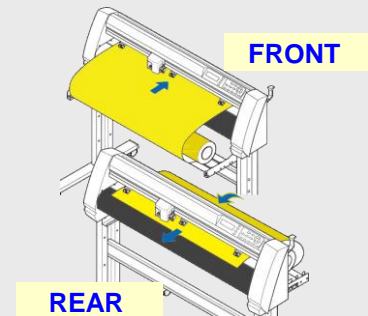
### Variable push roller pressure

FC7000MK2 provides 2 selectable push roller pressure to set by different material characteristics for optimized media feed.



### Bi-directional media loading

FC7000MK2 is capable for users to select either front or rear media loading depending on applications and materials.

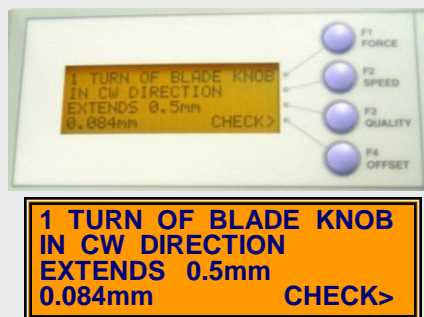


# New design for better operability

FC7000MK2 is designed for the most user-friendly operation. It is simpler and easier than ever!

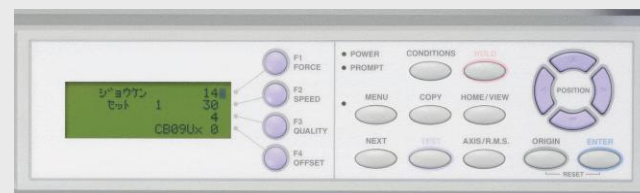
## Blade length navigator

Blade length navigator advises users the most optimized length of blade for each material thickness. Less chance of damaging a blade even by beginner.



## Large LCD display w/back light

Large LCD display with back light allows users to quickly glance at all cutting conditions.



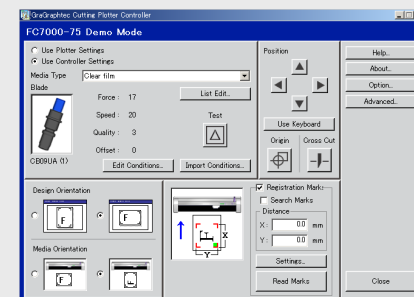
## Media supply mechanism

The media supply mechanism is to assist users in loading and aligning the media accurately. It also prevents media unnecessary fed out of the roll during cutting operation.



## Cutting Plotter Controller

The cutting plotter controller allows users to setup FC7000MK2 from PC for the most efficient operation.



# Fulfilled software

## Cutting Master 2

Operability that interfaces with application software is improved by fulfilled plug-in driver

### Compatible software

Compatible with CorelDraw & Illustrator

#### Adobe Illustrator

- for Windows 8, 9, 10, CS, CS2, CS3
- OS version Windows 2000, XP, Vista
- for Macintosh 10, CS, CS2, CS3
- OS version OSX 10.2 or later

#### Corel Draw

- for Windows 10, 11, 12, X3, X4
- OS version Windows 2000, XP, Vista



Cutting Master 2 1.00 Build Number 941

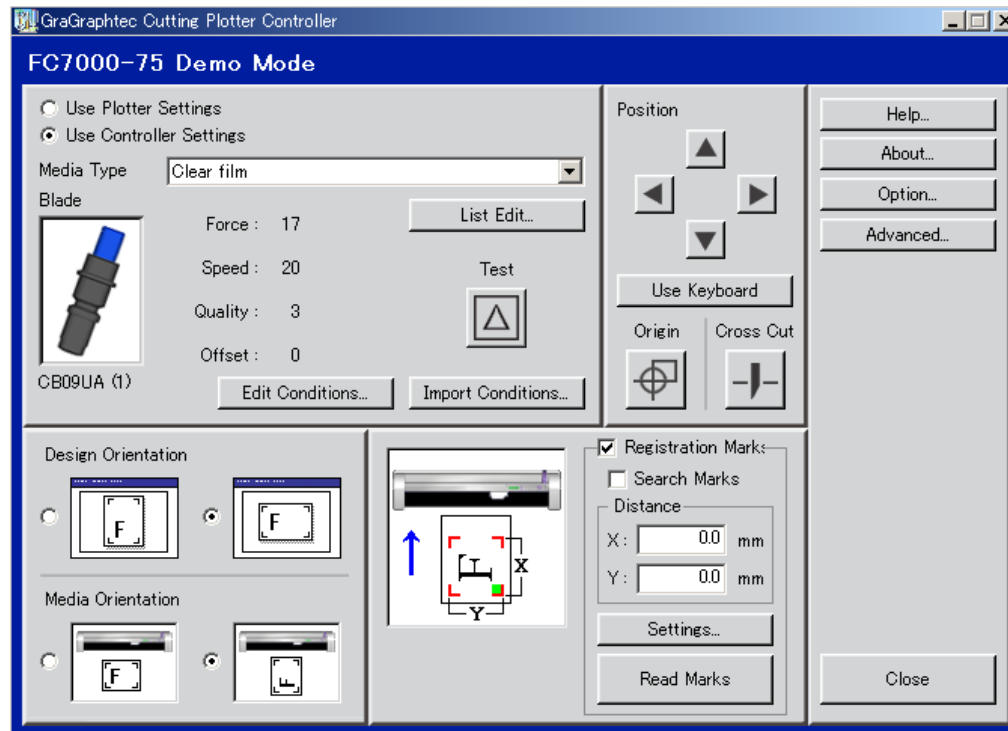
# Enhanced software control

## Cutting Plotter Controller

The cutting plotter controller allows users to directly control FC7000MK2 from PC.

## Cutting Plotter Controller

- Cutting condition setting  
(Tool type, Force, Speed, Quality)
- ARMS3.0 control menus
- Sheet cutter setting
- Blade positioning
- Rotate
- Origin offset setting
- Cutting Test menu
- Supporting short-cut keys



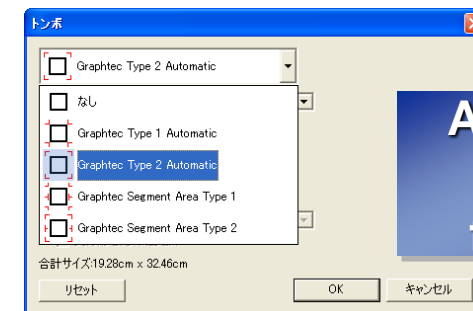
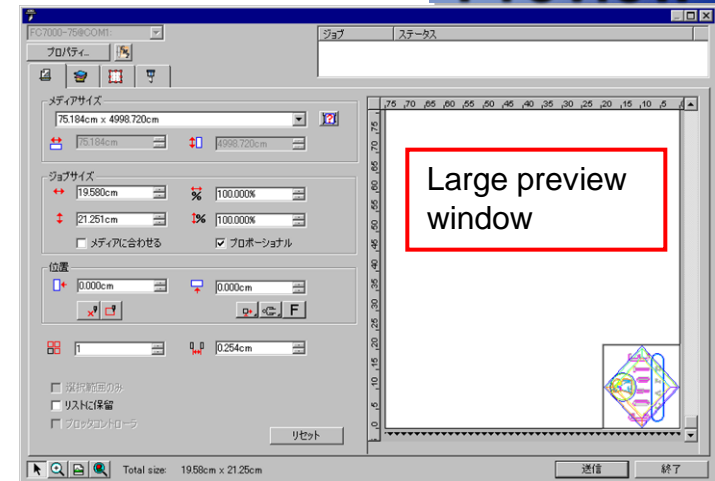
# Cutting Master 2

# Function 1

## Plotter control function

- ❑ Direct output from software
- ❑ Output by color/layer
- ❑ Preview window for check actual cutting
- ❑ Control of cutting condition such as cut and speed
- ❑ 3 types of cut line type can be editable
- ❑ Number of over cut can be specified
- ❑ Peeling line can be added
- ❑ Additional ARMS function
- ❑ Automatic ARMS control by command

## Preview



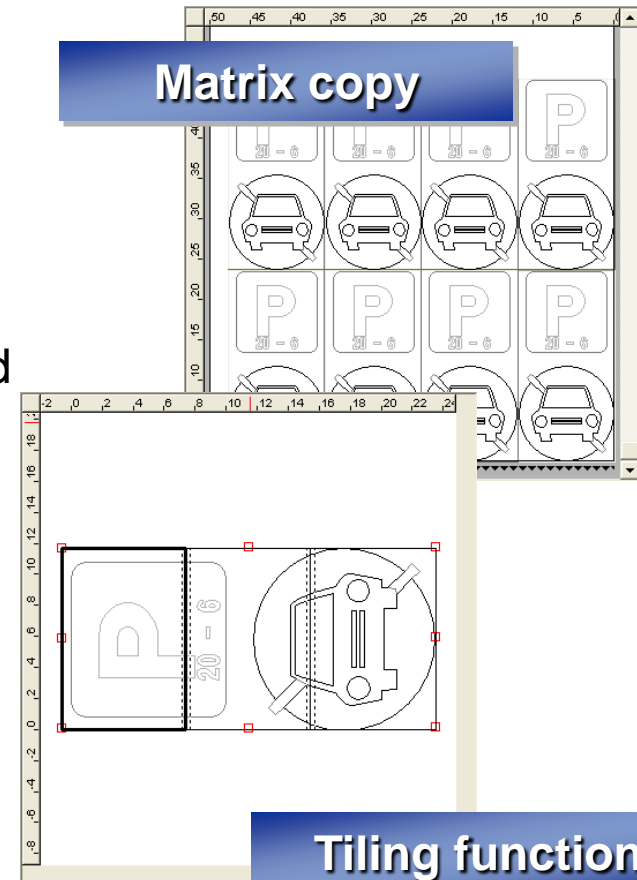
## Additional ARMS function

# Cutting Master 2

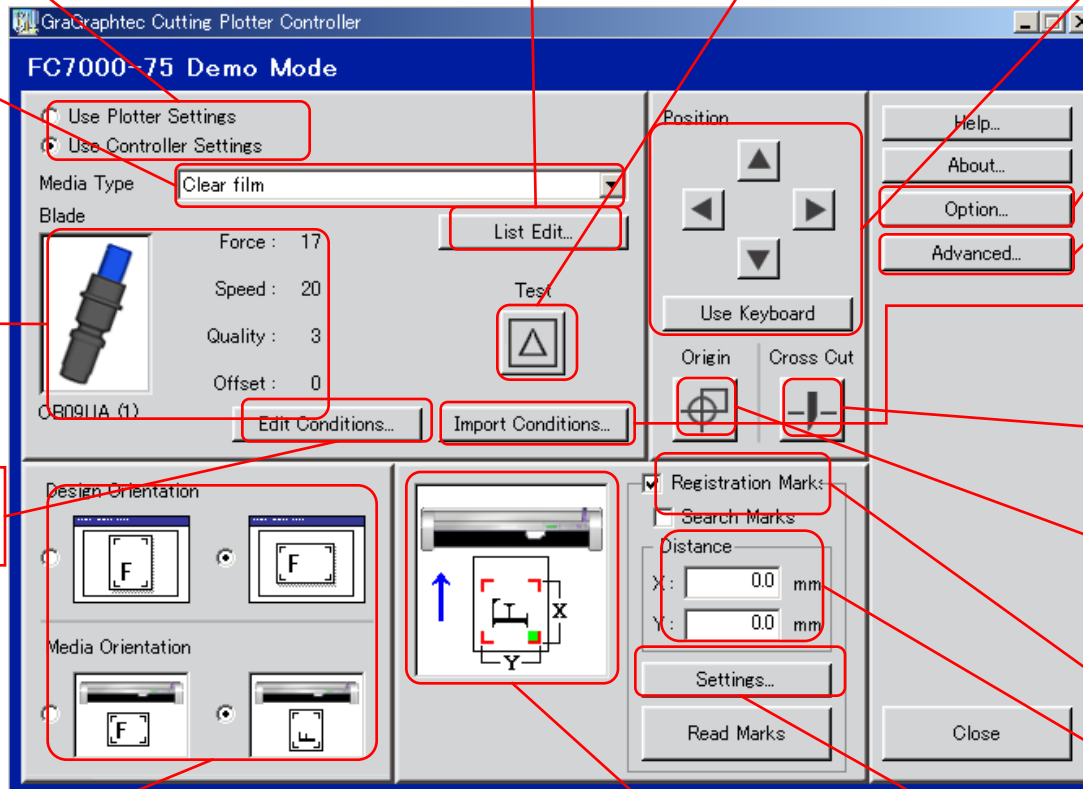
# Function 2

## Edit function

- ❑ Centering, Rotate, Mirror for easy layout
- ❑ Matrix copy for higher productivity
- ❑ Calculation formula can be input directly
- ❑ Specified width of outline can be detected
- ❑ Auto-welding for binding same color of shapes
- ❑ Tiling / Paneling for segmentation of cutting



# Plotter Controller Menu 1



Priority setting... either hardware or software

List edit button to modify or add user-defined cutting conditions

Cutting test button

Button to move tool position. Users can also use arrow keys on PC keyboard by clicking "Use Keyboard" button

Pre-registered default cutting conditions described by material types

Optional settings

Advanced settings

Cutting condition setting

Users can get current cutting condition on the plotter

Cutting condition edit button

Cross cutter setting

Set new origin

Enable/Disable ARMS

Mark distance setting

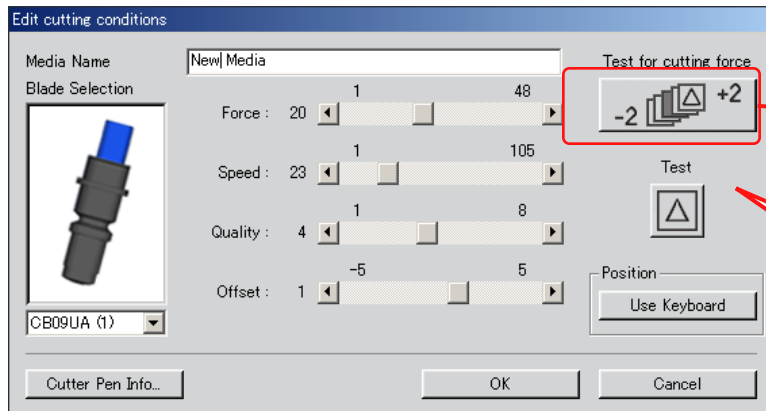
Orientation settings for both images in application software and media on a plotter

Orientation navigator to match images in application software to media direction

ARMS setting button

# Plotter Controller Menus 2

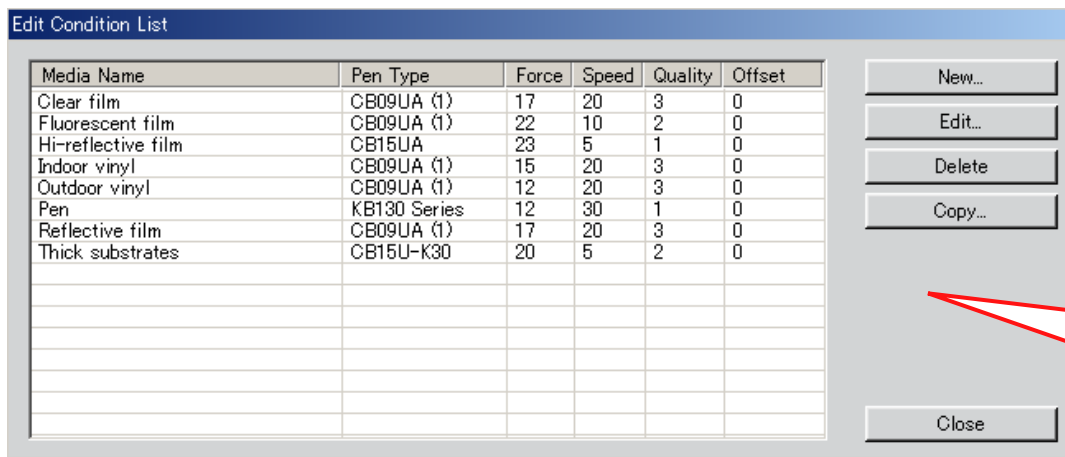
## Cutting Condition Window



Plotter will cut TEST pattern in 5 different FORCE settings (+/-2 parameters range from the current FORCE setting)

This window allows users to setup all cutting conditions

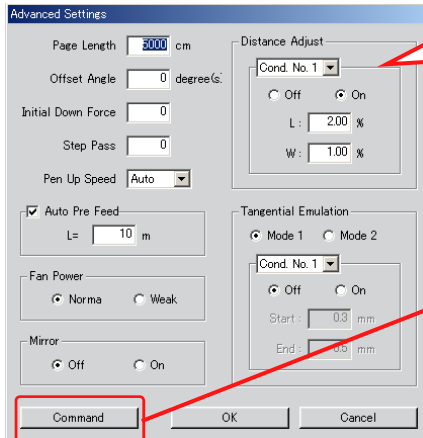
## List Edit Window



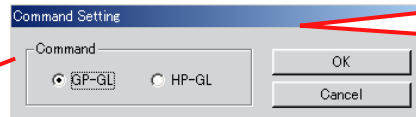
Users can define as many combination of cutting conditions as they want!

# Plotter Controller Menus 3

## Advanced setting window

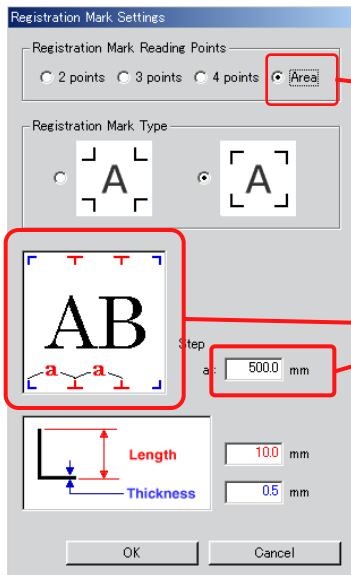


It is difficult to get into advanced settings on a plotter, but you can do all these advanced settings within this single window



Users can even change command setting between GPG-L and HPGL

## ARMS setting window

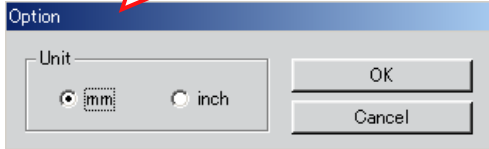


Area segmentation setting is added

Step length setting in area segmentation

## Optional setting window

Unit setting between metric and inch



# Plotter Controller Menus 4

## Supporting short-cut key

**User Keyboard**

**Start Reading**

**TEST**

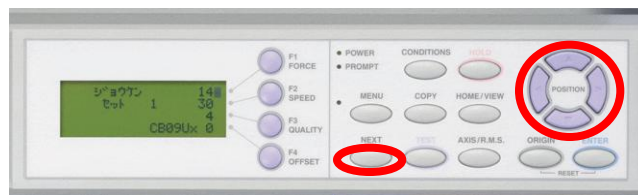
**Origin**

**Tool Position**

**Shift+ Arrow: for fast movement**  
**Ctrl+Arrow: for slow movement**



**HINT**



**POSITION + NEXT for fast movement from control panel operation**

## Specifications

Parameter	FC7000MK2-60	FC7000MK2-75	FC7000MK2-100	FC7000MK2-130	FC7000MK2-160
CPU	32-Bit				
Configuration	Digital Servo Friction feed with MicroGritrol™ drive				
Max. cut area (expanded mode)	610 mm x 50m (24 in x 164 ft)	762 mm x 50m (30 in x 164 ft)	1067 mm x 50m (42 in x 164 ft)	1372 mm x 50m (54 in x 146 ft)	1626 mm x 50m (64 in x 146 ft)
Guaranteed precision cutting area *1	590 mm x 15m (23.2 in x 50 ft)	742 mm x 15m (29.2 in x 50 ft)	1047 mm x 15m (41.2 in x 50 ft)	1352 mm x 15m (53.2 in x 50 ft)	1606 mm x 15m (63.2 in x 50 ft)
Mountable media width	Max. 770 mm (30.3 in) Min. 50 mm (2 in)	Max. 920 mm (36.2 in) Min. 50 mm (2 in)	Max. 1224 mm (48.1 in) Min. 50 mm (2 in)	Max. 1529 mm (60.1 in) Min. 50 mm (2 in)	Max. 1834 mm (72.2 in) Min. 50 mm (2 in)
Max. cross cut area	730mm (28.7 in)	901mm (35.5 in)	1206mm (47.5 in)	1511mm (59.5 in)	1765mm (69.5 in)
Max. cutting speed (Axial)	1485mm / sec (58.5 in/s) at a 45° angle				
Max. axial acceleration	4.0 G (39.2m/s <sup>2</sup> )				
Cutting pressure	20g to 600g (0.196N to 5.88N) in 48 steps				
Min. character size	3mm (0.125 in.) alphanumeric Helvetica med. Font				
Mechanical resolution	0.005mm (0.0002 in)				
Programmable resolution	GP-GL : 0.1 / 0.05 / 0.025 / 0.01mm , HP-GL : 0.025mm *2				
Repeatability *1	Max. 0.1 mm / 2 m (0.0039 in / 80in) smaller				
Tools	Accepts (1) cutting blade, (1) plotting pen, and (1) pouncing tool ; Second penholder (optional)				
Blade types	Supersteel (0.9mm or 1.5mm), Sapphire(1.5mm)				
Pen types	Water-based fiber-tip, oil-based ballpoint, and disposable ink pens				
Pouncing tool type	Requires optional pouncing tool : (PPA33-TP12, 1.2-mm pin diameter)				
Media types	Self-adhesive vinyl film, diamond grade, flourescent film, reflective film, Amberlith™, Rubylith™, window film, high-intensity reflective film *4, paint protection film, up to 0.25mm tick , sandblast resist rubber up to 1mm thick, etc.				
Compatible paper for pouncing	Regular paper from 0.06 to 0.13 mm thick				
Standard interfaces	RS-232C / USB2.0 (Full speed)				
Buffer memory	2 MB				
Command sets	GP-GL / HP-GL				
LCD Panel	LCD 20 x 4 - Supports 7 languages: with amber backlight				
Power supply	100-240VAC/50-60 Hz (Auto switching)				
Power consumption	160VA max.				
Operating environment	Temperature: +10° C to +35° C				
	Humidity: 35% to 75% (non-condensing)				
Guaranteed accuracy environment	Temperature: +16° C to +32° C				
	Humidity: 35% to 70% (non-condensing)				
External dimensions (W x D x H) including stand	1110 x 715 x 1210 mm	1260 x 715 x 1210 mm	1560 x 715 x 1210 mm	1860 x 715 x 1210 mm	2120 x 715 x 1210 mm
	43.7 x 47.6 x 28.1 in	49.6 x 47.6 x 28.1 in	61.4 x 47.6 x 28.1 in	73.2 x 47.6 x 28.1 in	83.5 x 47.6 x 28.1 in
Weight including stand	36 kg (79lbs)	39kg (86lbs)	43kg (95lbs)	51kg (112lbs)	59kg (130lbs)

\*1 When operated with Graphtec specified media and conditions.

\*2 HP-GL is a registered trademark of Hewlett-Packard Company.

\*3 The 2-pen unit is a factory-installed option. It cannot be retrofitted.

\*4 The CB15UA cutter blade and a reinforced backing sheet must be used when cutting high

## Medias that are guaranteed the 15m tracking

Manufacturer	Model	Media width	Guaranteed feed length
3M	Scotchcal ElectroCut Graphic Film	36 inches or shorter	50 feet
	Scotchcal Series 7125	30 inches or shorter	
ARLON	Series 4500	30 inches or shorter	40 feet

Media should be adapted to the operation environment before use

Media should not have any damage and wrinkles

Front edge of media should be straight

(The condition of front edge is same level as when cut by FC7000 cross cutter)

Edge of roll should be aligned

Media should be tightly rolled

Cutting operation should be done under calm environment

Dedicated basket which is larger capacity should be used

Basket should not touch with any other object

Any item should not be left in the basket

Pre feeding operation should be done for cutting length before cutting

Suitable cutting conditions are;

Force:14, Speed:30, Quality:4 (all other machine conditions should be factory default setting)

Only 2 pinch rollers should be used

(if all pinch rollers are used, media shift is accumulated and it causes media shift when long length cutting)

## Standard Accessories

### AC power cord

1



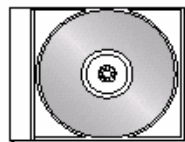
### USB cable (3-m length)

1 each



### User Guide CD-ROM

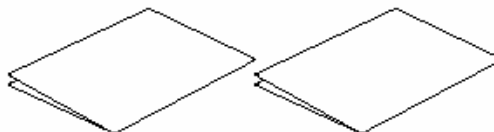
1



Contains:  
• User's Manual (pdf)  
• Windows driver/Macintosh plug-in software

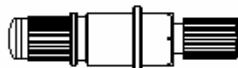
### Quick Start Manual, Usage Precautions

1 of each



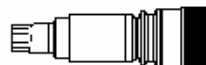
### Cutter holder (PHP32-CB09N)

1



### Water-based fibertip pen

1



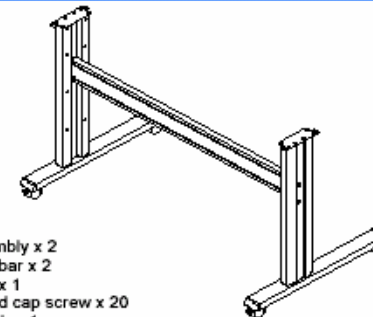
### Cutter blades (CB09UA-2)

1



### Stand (available as an option for the FC7000-75 model)

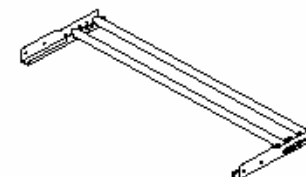
1



- Base assembly x 2
- Stand side bar x 2
- Center bar x 1
- Socket head cap screw x 20
- Allen wrench x 1

### Media bracket

1



- Media stocker x 2
- Stock roller x 2
- M4 binding head screws x 8

# Supplies

Item	Model	Contents
Cutter plunger	PHP32-CB09N-HS	Used with 0.9-mm diameter cutter blades (CB09UA-5)
	PHP32-CB15N-HS	Used with 1.5-mm diameter cutter blades, has a built-in spring
	PHP31-CB09-HS	Used with 0.9-mm diameter cutter blades (CB09UA-5)
	PHP31-CB15-HS	Used with 1.5-mm diameter cutter blades, comes with one tube of grease
Cutter blade	CB09UA-5	0.9 mm diameter, supersteel blade, comes with a spring, for cutting general film
	CB15U-5	1.5 mm diameter, supersteel blade, for cutting slightly thick film
	CB15U-K30-5	1.5 mm diameter, supersteel blade, for cutting thick materials
	CB15UA-K30-2	1.5 mm diameter, supersteel blade, for cutting high-intensity reflective
	CB15UB-2	1.5 mm diameter, supersteel blade, for cutting small text
Pouncing tool	PPA33-TP12	1.2 mm diameter, plunger, pin
Water-based fibertip pen	KF550 Series	
Oil-based ballpoint pen	KB140 Series	
Oil-based ballpoint pen plunger	PHP31-BALL	
Disposable ink pen	SD Series	0.2 diameter - 0.5 mm
Ink pen	PHP32/33/34-INK	
Loupe	PHP61-LOUPE	Pen-type loupe with a x6 magnification ratio
Cross-cutter blade	CT01H	
	CT02U	Supersteel





# Graphtec Blades



Blade Name	FC7000 series FC7000MK2 series	FC5100 series	CE5000 series	CE5000- 120AP		
CB15U-K30-5	•	•	•	•		Cutting Sandblast and Thicker materials
CB15UA-K30-2	•	•				
CB15UB-2	•	•	•	•		For small size character cutting
CB15UA-2	•	•				For Cutting Thick material. The CB15UA is designed for specifically High-Intensity reflective media
CB15U-5	•	•	•	•		For specifically cutting films such as Rubylith, Amberlith
CB15-05S	•	•				For Cutting Vinyl, Low Grade Reflective, Rubylith,
CB09UA-5	•	•	•	•		

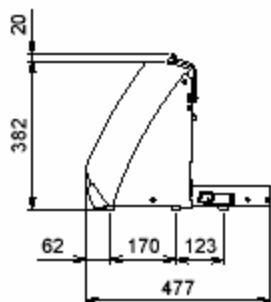
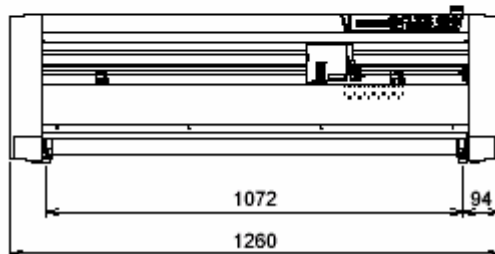
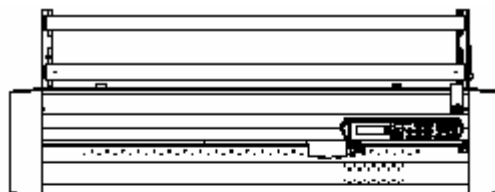
# Graphtec Blade Holders



Blade Holder Name		Blade	FC7000 series, FC7000MK2 series	FC5100 series	CE5000 series	CE5000- 120AP
PHP31-CB15-HS		CB15U-5, CB15UA-2 CB15U-K30-5 CB15UA-K30-2 CB15-05S	•	•		
PHP31-CB09-HS		CB09UA-5	•	•		
PHP32-CB15N-HS		CB15U-5, CB15UB-2 CB15U-K30-5 CB15UA-2, CB15-05S CB15UA-K30-2	•	•	•	•
PHP32-CB09N-HS		CB09UA-5	•	•	•	•

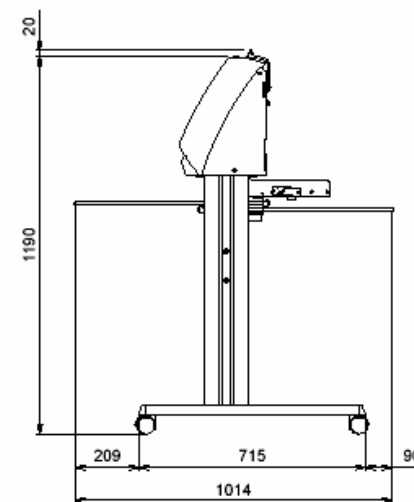
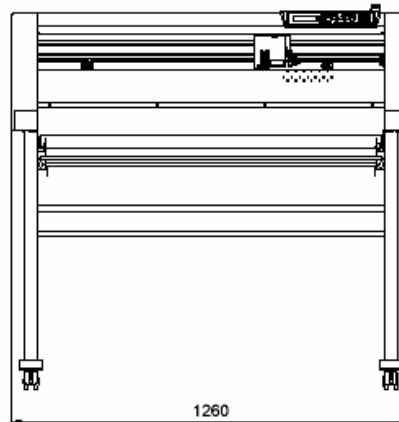
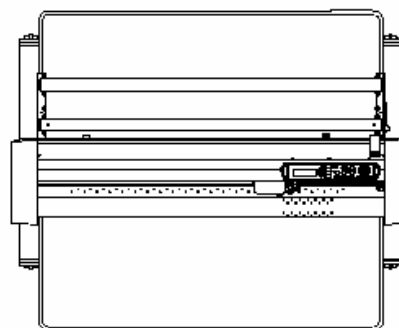
# External Dimensions

## FC7000MK2-75



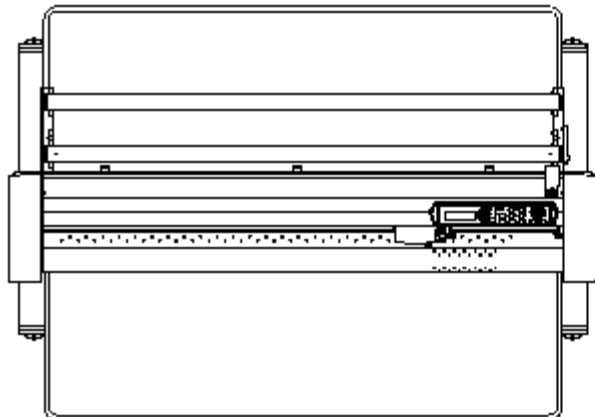
unit: mm  
dimensional error: ± 5 mm

OPTIONAL STAND AND BASKET PROVIDED

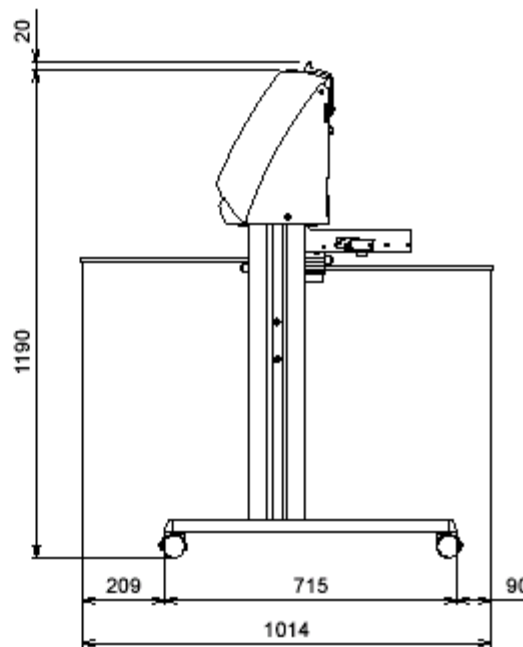
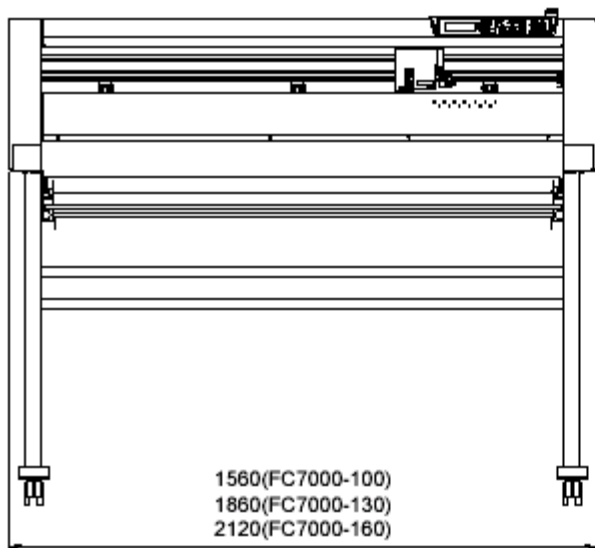


unit: mm  
dimensional error: ± 5 mm

# External Dimensions

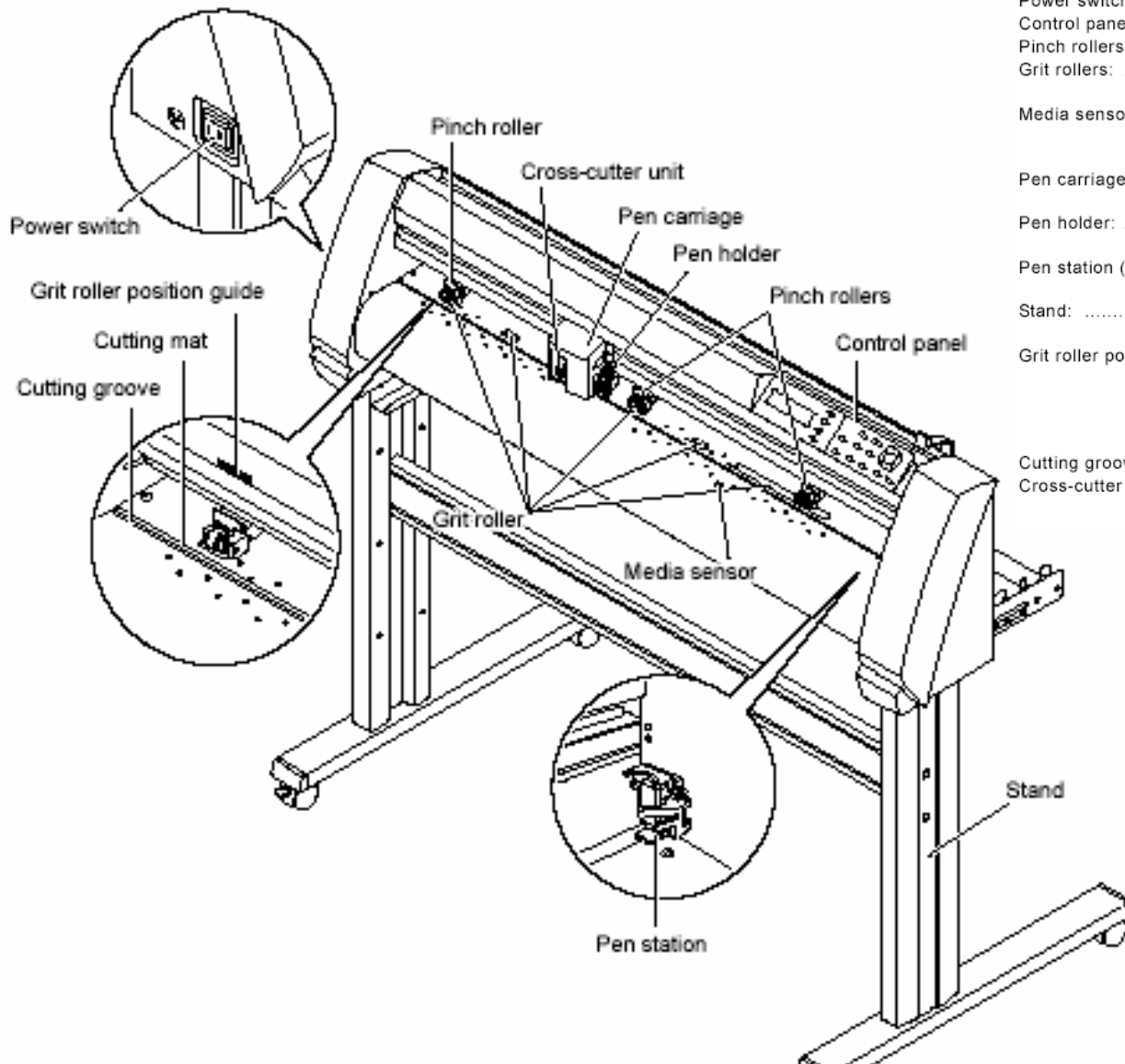


FC7000MK2-100/130/160



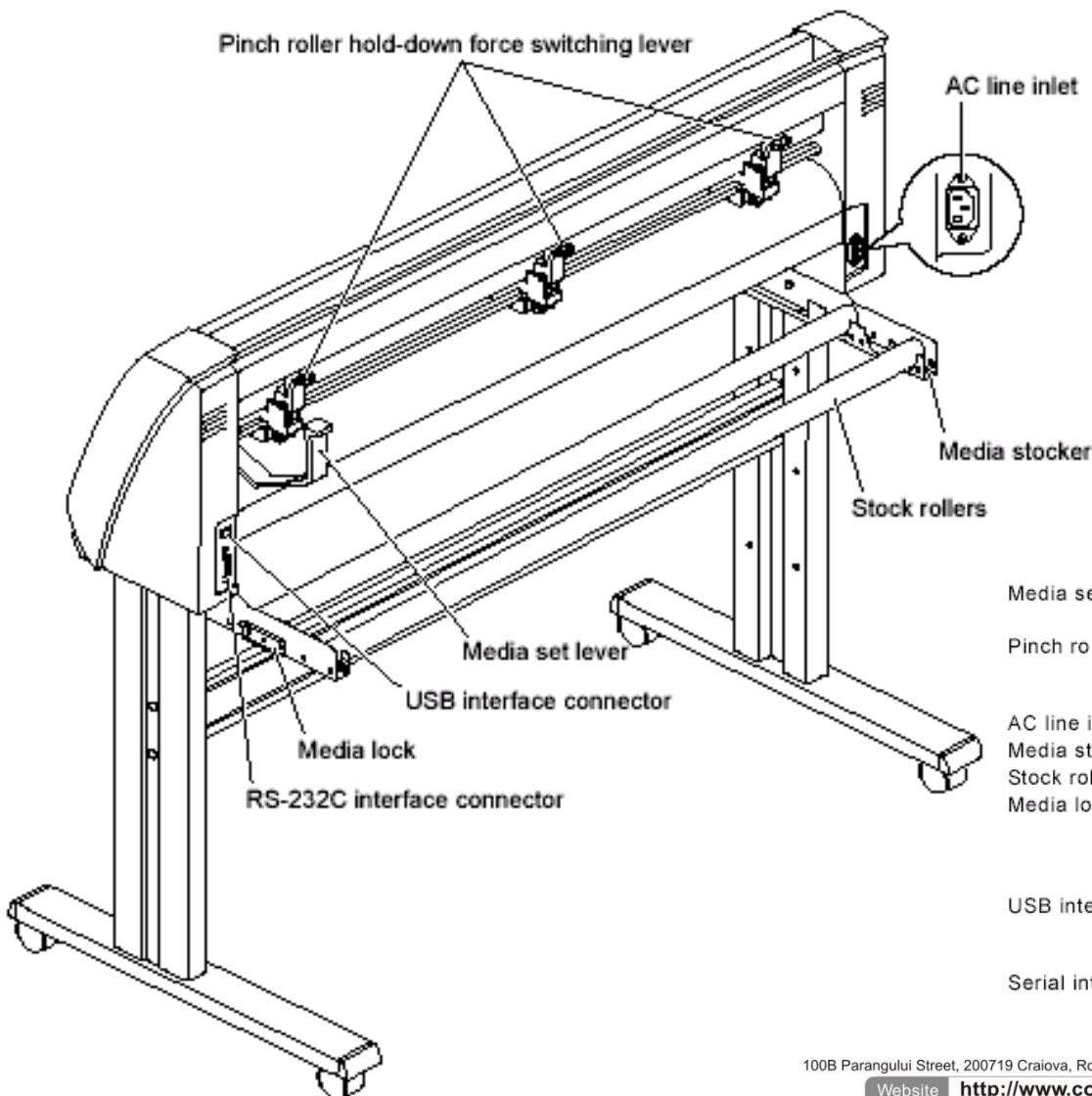
unit: mm

# Nomenclature – Front View -







- Power switch: .....Used to turn the plotter on
- Control panel: .....Used to access various plotter functions.
- Pinch rollers: .....Rollers that push the media against the grit rollers.
- Grit rollers: .....Metallic rollers with a file-like surface that feed the media back and forth.
- Media sensors: .....The front sensor is used to sense the leading edge of the media. The rear sensor is used to sense the trailing edge of the media.
- Pen carriage: .....Moves the cutter-pen or plotting pen across the media during cutting or plotting.
- Pen holder: .....Holds the cutter-pen or plotting pen and moves it up or down.
- Pen station (installed on 2-pen models only):  
The second pen is mounted here.
- Stand: .....Used to make the plotter more portable and to free up counter space
- Grit roller position guide:  
Stickers on the front of the Y rail and the rear side of the top cover that show the position of each grit roller. Use these alignment marks as an aid in locating the pinch rollers.
- Cutting groove: .....Used when cross-cutting is performed.
- Cross-cutter unit: .....Used to perform cross-cutting of media so that the cut length can be removed from the roll.

# Nomenclature - Rear View -


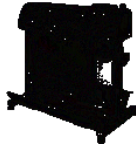



- Media set lever: .....Used to raise or lower the pinch rollers during the loading or unloading of media.
- Pinch roller hold-down force switching lever:  
Used to switch between the two pinch roller forces (strong and weak).
- AC line inlet: .....Inlet where the power cord is connected.
- Media stocker: .....Used to carry roll media and ensure its proper rotation.
- Stock rollers: .....A media roll is placed on these rollers.
- Media lock: .....Used to prevent the stock rollers from rotating when the media roll has been placed on top of them. The media lock ensures that the media is pulled straight out from the roll.
- USB interface connector:  
Used to connect the plotter to the computer with a USB interface cable.
- Serial interface connector:  
Used to connect the plotter to the computer with an RS-232 serial interface cable.



# Comparison Chart 24-inch Cutters

Manufacturer		GRAPHTEC	Roland	Mitsubishi	MUTOH
Model		FC7000MK2-60	GX-24	CG-60SR	SC-850D
					
Cutting area	Width	610mm (24.0")	584 mm (23")	606mm (23.9")	630mm (24.8")
	Length	50m (164')	25m (82')	51m (167')	
	Guaranteed	15m x 590mm		2m x 586mm	
Min. media width		50mm (1.97")	50mm (1.97")	90mm (3.5")	
Max. media width		770mm (30.3")	700mm (27.5")	740mm (29.1")	850mm (33.5")
Max. cut speed		1485mm/2	500 mm/s	850mm/s	1000mm/s
Cut force		600g	250g	400g	450g
Interface		RS-232C/USB 2.0	RS-232C/USB 1.1	USB	RS-232C/USB
RMS	Axis alignment	4 points (X, Y compensation)	3 points	4 points	4 points
	RMS command	Yes			
	Auto origin search	Yes	No	No	No
	Segment area	Yes	No	Yes	No
Plotter controller		Yes	No	No	No
Software	Illustrator	Cutting Master 2	CutStudio	FineCut7	Photo Print (option)
	Corel Draw				





# Comparison Chart 30-inch Cutters

Manufacturer		GRAPHTEC	Mimaki	Summa
Model		FC7000MK2-75	CG-75FX	S75D
				
Cutting area	Width	762mm (30.0")	760mm (29.9")	742mm (29.2")
	Length	50m (164')	51m (167')	50m (164')
	Guaranteed	15m x 742mm	10m x 760mm	40' (12.2m)
Min. media width		50mm (1.97")	90mm (3.54")	6cm (2.4")
Max. media width		920mm (36.2")	1040mm (40.9")	84cm (33")
Max. cut speed		1485mm/s	1400mm/s	1414mm/s
Cut force		600g	400g	400g
Interface		RS-232C/USB2.0	RS-232C/USB1.1	RS-232C/USB1.1
RMS	Axis alignment	4 points (X, Y compensation)	4 point (X axis only)	"OPOS" fully automated contour
	RMS command	Yes	Yes	
	Auto origin search	Yes	No	
	Segment area	Yes	No	
Plotter controller		Yes	No	
Software	Illustrator	Cutting Master 2	Fine Cut	Cutter Control™ for adjustment of setting from PC
	Corel Draw		No	




# Comparison Chart 42-inch Cutters

Manufacturer		GRAPHTEC	Roland
Model		FC7000MK2-100	GX-400
			
Cutting area	Width	1067mm (42.0")	1000mm (39.3")
	Length	50m (164')	24998mm (82')
	Guaranteed	10m x 1047mm 15m x 849mm	4m (600mm or wider width) 8m (less than 600mm width)
Min. media width		100mm (3.9")	90mm (3.5")
Max. media width		1224mm (48.2")	1178mm (46.4")
Max. cut speed		1485m / 2	850m / s
Cut force		600g	350g
Interface		RS-232C/USB 2.0	RS-232C/USB 1.1
RMS	Axis alignment	4 points (X, Y compensation)	3 points
	RMS command	Yes	Yes
	Auto origin search	Yes	No
	Segment area	Yes	No
Plotter controller		Yes	No
Software	Illustrator	Cutting Master 2	Cut Choice
	Corel Draw		

# Comparison Chart 54-inch Cutters

Manufacturer		GRAPHTEC	Roland	MUTOH	Summa
Model		FC 7000M k2-130	GX-500	SC-1400D	S140 D
					
Cutting area	Width	1372mm (54.0")	1195mm (47.0")	1200mm (47.2")	1350mm (53.1")
	Length	50m (164')	24998mm (82')		50 m (164')
	Guaranteed	10m x 1352mm 15m x 849mm	4m (600mm or wider width) 8m (less than 600mm width)		40' (12.2m) (less than 30" width media)
Min. media width		100mm (3.9")	90mm (3.5")		170mm (6.7")
Max. media width		1529mm (60.2")	1372mm (54")	1400mm (55.1")	1450mm (57.1")
Max. cut speed		1485mm / 2	850mm / s	1000mm / s	1414mm / s
Cut force		600g	350g	450g	400g
Interface		RS-232C/USB 2.0	RS-232C/USB 1.1	RS-232C/USB	RS-232C/USB 1.1
RMS	Axis alignment	4 points (X, Y compensation)	3 points	4 points	"OPOS" fully automated contour
	RMS command	Yes	Yes		
	Auto origin search	Yes	No	No	
	Segment area	Yes	No	No	
Plotter controller		Yes	No	No	
Software	Illustrator	Cutting Master 2	Cut Choice	Photo Print (option)	Cutter Control™ for adjustment of setting from PC
	Corel Draw				

# Comparison Chart 64-inch Cutters

Manufacturer		GRAPHTEC	Mimaki	Summa
Model		FC7000MK2-160	CG160-FX	S160 D
				
Cutting area	Width	1626mm (64.0")	1600mm (63.0")	1580mm (62.2")
	Length	50m (164')	51m (167')	50m (164')
	Guaranteed	10m x 1606mm 15m x 849mm	10m (30')	40' (12.2m) (less than 30" width media)
Min. media width		100mm (3.9")	90mm (3.54")	170mm (6.7")
Max. media width		1834mm (72.2")	1880mm (74.0")	1680mm (66.1")
Max. cut speed		1485mm/2	1400mm/s	1414mm/s
Cut force		600g	400g	400g
Interface		RS-232C/USB2.0	RS-232C/USB1.1	RS-232C/USB1.1
RMS	Axis alignment	4 points (X, Y compensation)	4 point (X axis only)	"OPOS" fully automated contour
	RMS command	Yes	Yes	
	Auto origin search	Yes	No	
	Segment area	Yes	No	
Plotter controller		Yes	No	
Software	Illustrator	Cutting Master 2	Fine Cut	Cutter Control™ for adjustment of setting from PC
	Corel Draw		No	