

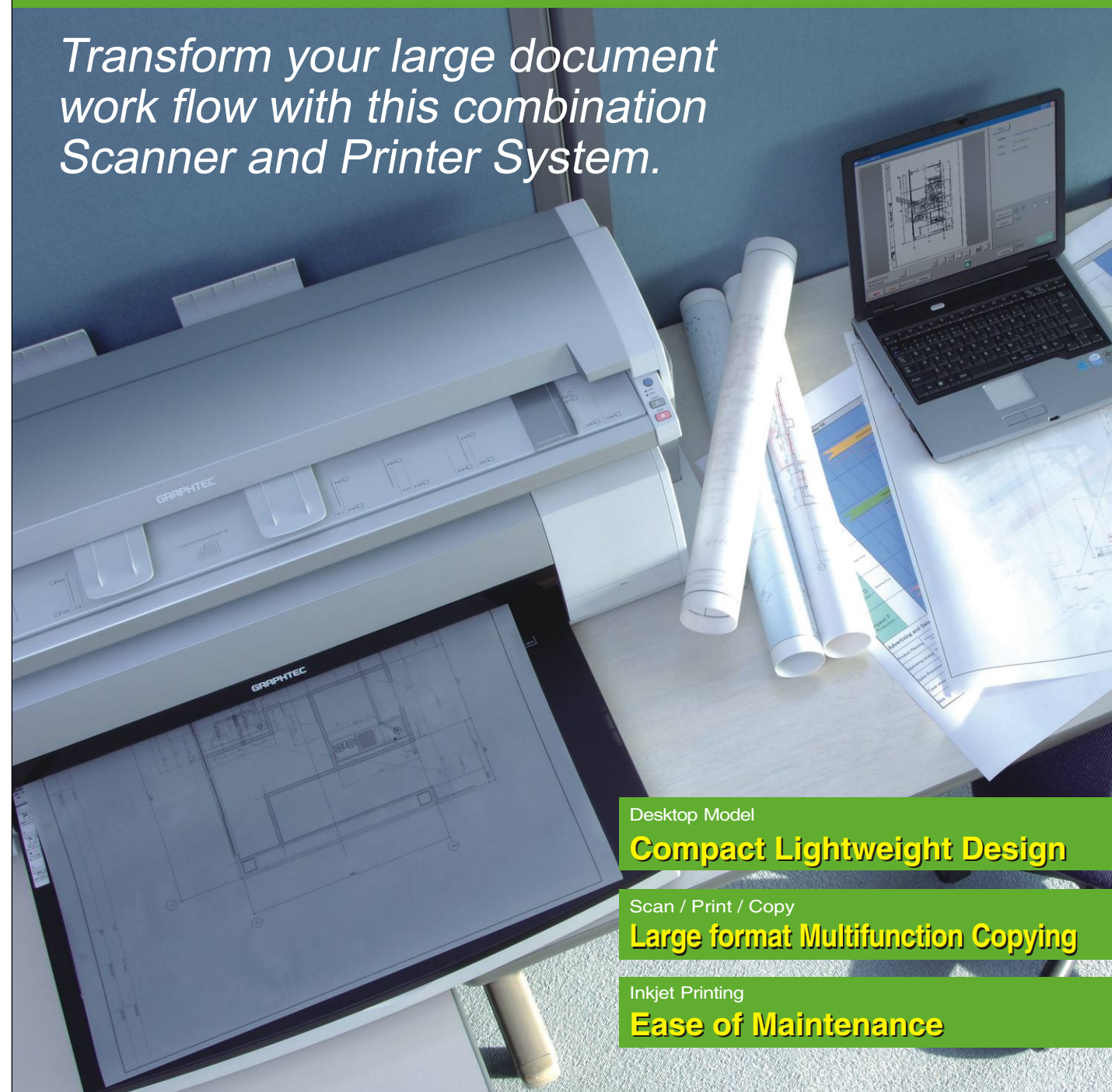
**GRAPHTEC**

Large Format Multi-Function System

**SCAN PRINT WIDE**

**SP200Wseries**

Transform your large document work flow with this combination Scanner and Printer System.



- Desktop Model
- Compact Lightweight Design**
- Scan / Print / Copy
- Large format Multifunction Copying**
- Inkjet Printing
- Ease of Maintenance**

| Specifications of the Scanner unit for SP200W |                                                                                                                                                      |
|-----------------------------------------------|------------------------------------------------------------------------------------------------------------------------------------------------------|
| Document width                                | Maximum width: 965 mm(38 inches); minimum width: 257 mm(10.12 inches)                                                                                |
| Document length *1                            | Maximum length: 16 m(629.9 inches); minimum length: 210 mm( 8.27 inches)                                                                             |
| Effective scanning width                      | Maximum width: 932.2 mm(36.70 inches)(centered); Minimum width: 50mm(1.97 inches)                                                                    |
| Effective scanning length                     | Maximum length: 16 m(629.9 inches); minimum length: 30 mm(1.18 inches)                                                                               |
| Document size *1                              | JIS A0, A1, A2, A3, A4 DIN A0, A1, A2, A3, A4<br>ANSI Engineering E, D, C, B, A ANSI Arch E, D, C, 30/36inch                                         |
| Document thickness                            | Up to 0.8 mm(0.031 inches) (including the carrier sheet)                                                                                             |
| Scanning margins                              | Leading edge, trailing edge: 4mm(0.157 inches) 0.5mm(0.020 inches) for each margin                                                                   |
| Scanning system                               | Main scanning system Contact image sensor system (five A4 sensors in a zigzag pattern)<br>Sub scanning system Document travel (sheet through) system |
| Scanning surface                              | Upper surface                                                                                                                                        |
| Optical resolution                            | 600dpi                                                                                                                                               |
| Interpolated resolution                       | 100/200/300/400/600/800/1200dpi                                                                                                                      |
| Scanning mode                                 | High-speed scan / Normal scan / High quality scan                                                                                                    |
| Scanning precision *2                         | 0.1% or 1 pixel, whichever is larger                                                                                                                 |
| Gradation                                     | Monochrome Bilevel, intermediate tones (dithering, error diffusion)<br>Gray 256 shades<br>Color 24-bit                                               |
| Threshold value                               | A DSP (digital signal processor) enables automatic setting of the threshold value (monochrome scans only)                                            |
| Color space                                   | sRGB                                                                                                                                                 |
| Interface                                     | USB2.0 (High-speed)                                                                                                                                  |
| Output                                        | Image data                                                                                                                                           |
| Rated power supply                            | 100 to 120/200 to 230 VAC ±10%, 50/60 Hz                                                                                                             |
| Operating environment                         | Temperature: 10 to 30degC, Humidity: 20% to 80% R.H. (non-condensing)                                                                                |
| Power consumption                             | 60 W or less (12 W or less in power-saving mode *3)                                                                                                  |
| Safety/EMC certificate                        | UL, FCC class B (USA), CE mark (EU)                                                                                                                  |

| Specifications of the Printer unit for SP200W |                                                                                                                                                                                       |
|-----------------------------------------------|---------------------------------------------------------------------------------------------------------------------------------------------------------------------------------------|
| Printing system                               | Thermal inkjet                                                                                                                                                                        |
| Print heads                                   | Black, Color(C/M/Y nozzles combined)                                                                                                                                                  |
| Ink                                           | 4 colors (Bk, C, M, Y)                                                                                                                                                                |
| Printing resolution                           | Color 4800 x 1200 dpi max.<br>Monochrome 2400 x 1200 dpi max.                                                                                                                         |
| Allowable paper sizes                         | ISO A1, A2, A3, A4, B2, B3, B4 DIN A1, A2, A3, A4<br>ANSI 22 x 34, 17 x 22, 11 x 17, 8.5 x 11(inch)<br>ANSI Arch 24 x 36, 18 x 24, 12 x 18, 9 x 12(inch)<br>JIS B2, B3, B4            |
| Allowable paper thickness                     | 0.065mm to 0.190 mm<br>0.0026inches to 0.0075 inches                                                                                                                                  |
| Margins                                       | Cut sheets Leading edge, trailing edge, left/right edges: 5 mm for each margin<br>(*Narrow setting) *5 Roll paper Leading edge, trailing edge, left/right edges: 5 mm for each margin |
| Margins (accuracy guaranteed)                 | Cut sheets Leading edge 5 mm, trailing edge 13 mm, left/right 5 mm<br>Roll paper Leading edge, trailing edge, left/right edges: 5 mm for each margin                                  |
| Maximum printing length                       | Cut sheets 1.4m (55.12inches)<br>Roll paper 18m (708.66inches)                                                                                                                        |
| Paper supply switching                        | Manual switching between roll paper and cut sheets                                                                                                                                    |
| Distance accuracy                             | 0.1% or 0.1 mm, whichever is larger<br>0.1% or 0.039inch, whichever is larger<br>(after user distance compensation has been performed)                                                |
| Buffer capacity                               | 32MByte                                                                                                                                                                               |
| Interfaces                                    | USB 2.0 Full-speed                                                                                                                                                                    |
| Rated power supply                            | 100 to 240 VAC, 50/60 Hz                                                                                                                                                              |
| Operating environment                         | Temperature: 15 to 30 C, Humidity : 20 to 80% RH (non-condensing)<br>barometric: 840hPa or higher                                                                                     |
| Power consumption                             | During operation: 50W or less; Standby status: 10 W or less                                                                                                                           |
| Safety/EMC certificate                        | UL, FCC class B (USA), CE mark (EU)                                                                                                                                                   |

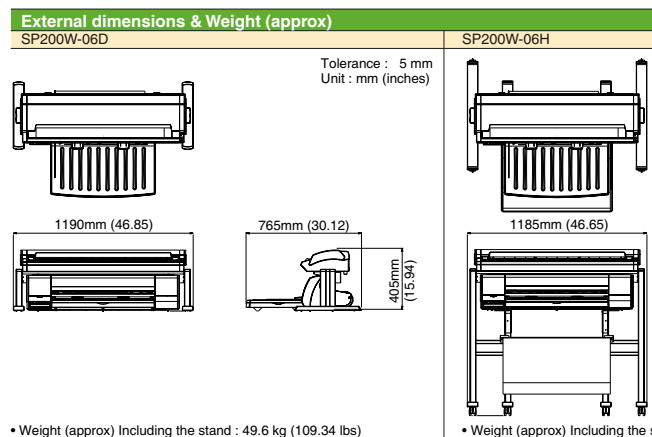
| Specifications of the Software for SP200W |                                                                                                                                                                                                                                                                                                                                                                                                                                                                                                                                                                                                                                                  |
|-------------------------------------------|--------------------------------------------------------------------------------------------------------------------------------------------------------------------------------------------------------------------------------------------------------------------------------------------------------------------------------------------------------------------------------------------------------------------------------------------------------------------------------------------------------------------------------------------------------------------------------------------------------------------------------------------------|
| Software name                             | OPS123 (Scanning ARTS SP)                                                                                                                                                                                                                                                                                                                                                                                                                                                                                                                                                                                                                        |
| Copy                                      | Copy settings Number of copies (1 to 999)<br>Continuous copying (continuous printing and scanning)                                                                                                                                                                                                                                                                                                                                                                                                                                                                                                                                               |
| Scan                                      | Output data format TIFF(G4), PLC, PCX, CG4, TIFF, BMP, JPEG, Grayscale etc.<br>Parameter settings Simple document type selection *4, Document size<br>Automatic despeckling function (pixel level)<br>Automatic skew correction ( 7 degree or less)<br>Continuous scanning, Automatic file naming, High-speed scanning<br>Color adjustment User-defined document creation<br>Scanning resolution setting<br>Hue, chroma, and luminosity adjustment (for 24-bit color)<br>Gamma, brightness, and contrast adjustment (for grayscale)<br>Black/white level setting<br>Display Scanner status display<br>Scan preview<br>Miscellaneous sRGB support |
| Print                                     | Input data format TIFF(G3/G4), BMP, JPEG, PLC, PCX, CG4 etc.<br>Settings Print size selection (enlarge/reduce function)<br>Zooming (25% to 400% in 1% increments)<br>Number of prints (1 to 999), Reprints (1 to 999), Margin settings<br>Print position specification (center/left margin, top margin)<br>Continuous printing, Rotate (90-degree steps)<br>Negative output, left/right reflection                                                                                                                                                                                                                                               |
| Copying speed                             | Print mode High speed Standard High quality<br>- Paper size : A1 size Monochrome 1min 33sec 4min 33sec 5min 17sec<br>- Media : Standard paper Color 4min 21sec 9min 02sec 15min 27sec                                                                                                                                                                                                                                                                                                                                                                                                                                                            |

| Hardware requirements for SP200W |                                    |
|----------------------------------|------------------------------------|
| CPU                              | Pentium III 1GHz ( Pentium 4 2GHz) |
| Memory                           | 256MB or more (1GB or more)        |
| Free space on the HDD            | 10GB or more (30GB or more)        |
| OS                               | Windows2000, Windows XP            |
| Interface                        | USB2.0 (High speed) x 2 ports      |

Suggested hardware requirements is in "( )".  
Depending on the condition of the usage, it may happen that the scanning speed become slow down.  
For example, to open the several data on the screen or to use the several applications at the same time may cause the slow down of the scanning speed.\*

| Option for scanner unit |                         |
|-------------------------|-------------------------|
| ISO922                  | 36"-size Carrier sheet  |
| ISO908                  | 25"-size Carrier sheet  |
| IH-90001BK              | Print head (Black)      |
| IH-90001CMY             | Print head (C/M/Y)      |
| IJ-90001BK              | Ink cartridge (Black)   |
| IJ-90001C               | Ink cartridge (Cyan)    |
| IJ-90001M               | Ink cartridge (Yellow)  |
| IJ-90001Y               | Ink cartridge (Magenta) |
| CT03U                   | Cross cutter            |

- \*1 If the document is a long-length document, the actual length that can be scanned is limited by the available memory (hard disk or other data storage device) of the computer to which the scanner is connected, and also by the grade of the medium being scanned.
- \*2 Notes on scanning precision  
The scanning precision may vary slightly depending on the grade and thickness of the medium being scanned, and on the operating conditions.
- \*3 The precision figures above were measured under the Graphtec specified operating conditions.
- \*4 Only when the power supply is 100 to 120 VAC.
- \*5 Monochrome: Maps/drawings (grayscale/monochrome), faint blueprints (monochrome), dark blueprints (monochrome), posters (grayscale), photographs (grayscale)  
Color: Photographs (full color), posters (full color), maps/drawings (full color/marker pen emphasis)\*
- \*6 SP200W cannot be printed without margins.
- \*7 Including the high stand.



| Accessories for scanner unit for SP200W-06D |     |
|---------------------------------------------|-----|
| Item                                        | Qty |
| 1 Desktop stand                             | 1   |
| 2 Power cable                               | 1   |
| 3 CD-ROM                                    | 1   |
| 4 USB Interface cable (3m)                  | 1   |
| 5 Setup manual                              | 1   |
| 6 Document returner (Rear guide)            | 1   |
| 7 Document support guide                    | 1   |
| 8 Cleaning paper                            | 1   |
| 9 Color adjustment kit                      | 1   |

| Accessories for printer unit for SP200W-06D      |     |
|--------------------------------------------------|-----|
| Item                                             | Qty |
| 1 Power cable                                    | 1   |
| 2 Print head (Bk, C/M/Y)                         | 1   |
| 3 Ink cartridge (Bk, C, M, Y)                    | 1   |
| 4 CD-ROM                                         | 1   |
| 5 USB Interface cable (3m)                       | 1   |
| 6 Quick Start Guide                              | 1   |
| 7 Document support guide                         | 1   |
| 8 Document guide table                           | 1   |
| 9 Roll stocker                                   | 1   |
| 10 Cross cutter                                  | 1   |
| 11 Screw driver                                  | 1   |
| 12 A2 size paper feed cassette(separate package) | 1   |

For SP200W-06H, the Hi stand is attached in stead of the desktop stand

Brand names and product names listed in this brochure are the trademarks or registered trademarks of their respective owners.  
Specifications are subject to change without notice.

**GRAPHTEC**  
Graphtec Corporation

503-10 Shinano-cho, Totsuka-ku, Yokohama 244-8503, Japan  
Tel : +81-45-825-6250 Fax : +81-45-825-6396  
Email : webinfo@graphtec.co.jp

Website <http://www.graphteccorp.com>

**COMPASS**  
MIND OPENER  
www.compass.com.ro

we simply do amazing things™  
100B Parangului Street, 200719 Craiova, Romania  
Tel : +40-351-451932 Tel/Fax: +40-251-414170  
Email : sales@compass.com.ro

Website <http://www.graphtecromania.ro>, [www.craftrobo.ro](http://www.craftrobo.ro)

advertisingsolutions™  
echipamente si consumabile  
pentru industria publicitara

[www.graphtecromania.ro](http://www.graphtecromania.ro)



# Simple software, greater ease of use. Announcing a new arrival on the market—the SP200W A1-size digital multifunction peripheral device

The SP200W is a compact, desktop-type, large-format digital multifunction peripheral offered at an appealingly low price.

The device combines scanning, printing, and copying functions in one system.

With features such as the digitizing of drawings to speed up work processes and a reduction in the costs associated with outsourced copying, the debut of this new digital multifunction peripheral will change the way you work.

## Digitization

# SCAN

## Face-up scanning

The surface to be scanned is loaded face-up for error-free scanning.

Revision of hand-drawn original drawings, process control charts and drawings; conversion of apparel patterns, posters, and other graphic material to electronic data

## Color & monochrome

# PRINT

## 3-way paper feed

Select roll paper, front manual feed, or the A2-size paper feed cassette\* to suit your needs.

Output of CAD drawings; output of process control charts, sales results charts, banners, scanned data and other graphic material

## Ease of use

# COPY

**93 seconds for an A1-size document**  
 (when outputting a monochrome document using the high-speed/plain paper modes)

**Stress-free copying of even large-format sizes**  
 Copying of monochrome and color drawings, blueprints, posters and other graphic material

Large Format Multi-Function System

# SCAN PRINT WIDE



**NEW SP200W-06D**

**NEW SP200W-06H**

## Lightweight, compact desktop model

Save space with a compact arrangement of scanner and inkjet printer devices, even though the scanner is A0-size. This is a large-format digital multifunction peripheral device that can be used on a desktop. A high-stand model, the SP200W-06H, is also available. Select the model that best suits your needs.

## Three modes for a variety of tasks

Three modes - SCAN, PRINT, and COPY - are provided. Select SCAN to convert drawings to electronic data, PRINT to output CAD drawings and to print posters and charts, and COPY to make color and monochrome copies. The SP200W will help you meet a variety of needs in your work, and expand the range of what you can accomplish.

## Easy operation with Scanning ARTS SP

The dedicated Scanning ARTS SP software provided with the SP200W lets you scan, print, and copy just as you would with an office copier. A wide variety of data-save mats - including PDF, JPEG, and BMP - are supported to allow you to use your data in different applications. For example, you can easily generate a black-and-white copy of a blueprint simply by selecting the COPY mode.

## An A0-size face-up scanner

Scanning can now be performed with the surface to be scanned loaded face-up. This feature enables you to check the document while it is being scanned, and helps to reduce the number of small mistakes - such as loading the document in the wrong direction, document skewing, or loading the wrong document.

## Simple application and driver software

### SCANNING ARTS SP (dedicated software)

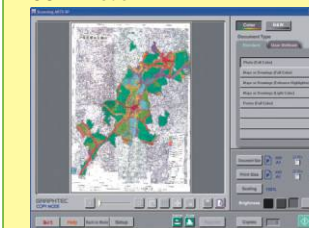
Main menu



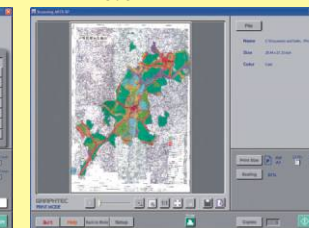
Select SCAN, PRINT, or COPY from the main menu.

After a mode has been selected directly, the parameters to be set for that mode are displayed in order, from top to bottom. Even a first-time user will be quickly up and running with this software.

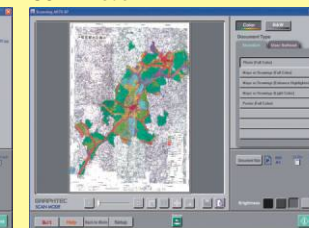
COPY mode



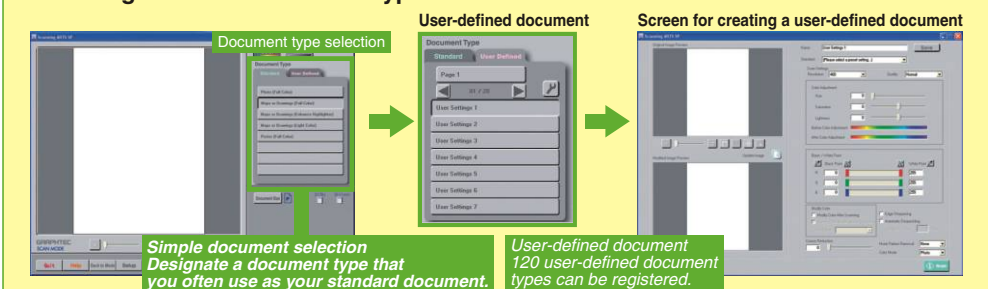
PRINT mode



SCAN mode



### Scanning ARTS SP Document types

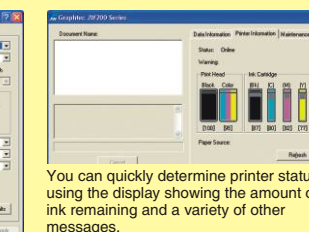
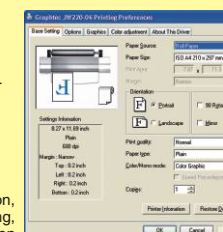


| Document Type                        | Document Type                     |
|--------------------------------------|-----------------------------------|
| Photo (Full Color)                   | Map or Drawing (Gray Scale)       |
| Map or Drawing (Full Color)          | Map or Drawing (Black and White)  |
| Map or Drawing (Enhance Highlighter) | Light Blueprint (Black and White) |
| Map or Drawing (Light Color)         | Dark Blueprints (Black and White) |
| Poster (Full Color)                  | Posters (Gray Scale)              |
|                                      | Photo (Gray Scale)                |
|                                      | News Paper                        |

| Color document types                   | B&W document types                 |
|----------------------------------------|------------------------------------|
| Photo (Full Color)                     | Maps or Drawings (Grayscale)       |
| Maps or Drawings (Full Color)          | Maps or Drawings (Black and White) |
| Maps or Drawings (Enhance Highlighter) | Light Blueprint (Black and White)  |
| Maps or Drawings (Light Color)         | Dark Blueprints (Black and White)  |
| Poster (Full Color)                    | Posters (Gray Scale)               |
|                                        | Photo (Gray Scale)                 |
|                                        | News Paper                         |

### Printer driver software

This software enables output from Windows software (such as CAD, spreadsheet, or word-processing programs), and also enables the SP200W to be used as a printer.



Even your selection of the printing orientation, which is easy to get wrong, can be checked on the Preview screen.

You can quickly determine printer status using the display showing the amount of ink remaining and a variety of other messages.