



NC-HIJ-A3

Digital Inkjet Carton Printing Machine

Using water-based pigment ink, easy to dry and water-resistant, rich and diverse printing media, suitable for all kinds of water-resistant material, it is applied to packaging products in many industries, and the production efficiency can reach 40m/min at the fastest.

Features

450mm

Various printing forms

The machine can support various forms of printing, the printing height can reach up to 450mm, and it supports the printing of boxes, folding cartons and other finished products.

90° folding

Easy to operate and humanized design

Computer touch screen, printing software interface design is simple and easy to understand, easy to operate.

Automatic loading and unloading equipment

Professional automatic loading and unloading equipment can be customized according to customer needs to improve production efficiency.

Positioning guide strips improve printing quality

The material is easily positioned during the feeding process, and there is no need to worry about printing misalignment. It is equipped with a suction platform and a conveyor belt to stably output high-quality finished products.

Green environmental protection and low cost

It adopts water-based pigment ink, which is easy to dry and water-resistant, green and environmentally friendly, and low in cost. It can print various absorbent materials.

Intelligent variable data printing

Realize the intelligent printing of variable elements such as barcodes and serial numbers, and reduce the time cost of sorting one by one.

Maintenance is more worry-free

Original modular ink supply, self-contained ink circulation function, cleaning cloth with automatic head seal, automatic ink circulation at regular intervals during standby, prolonging the life of the print head.

High efficiency without plate making

Compared with traditional printing, it is more convenient and does not require plate making, plate printing and repeated color registration. It can be printed when it is turned on, which has great advantages for rapid proofing and small batch replenishment and urgent order production.

High precision and rich colors

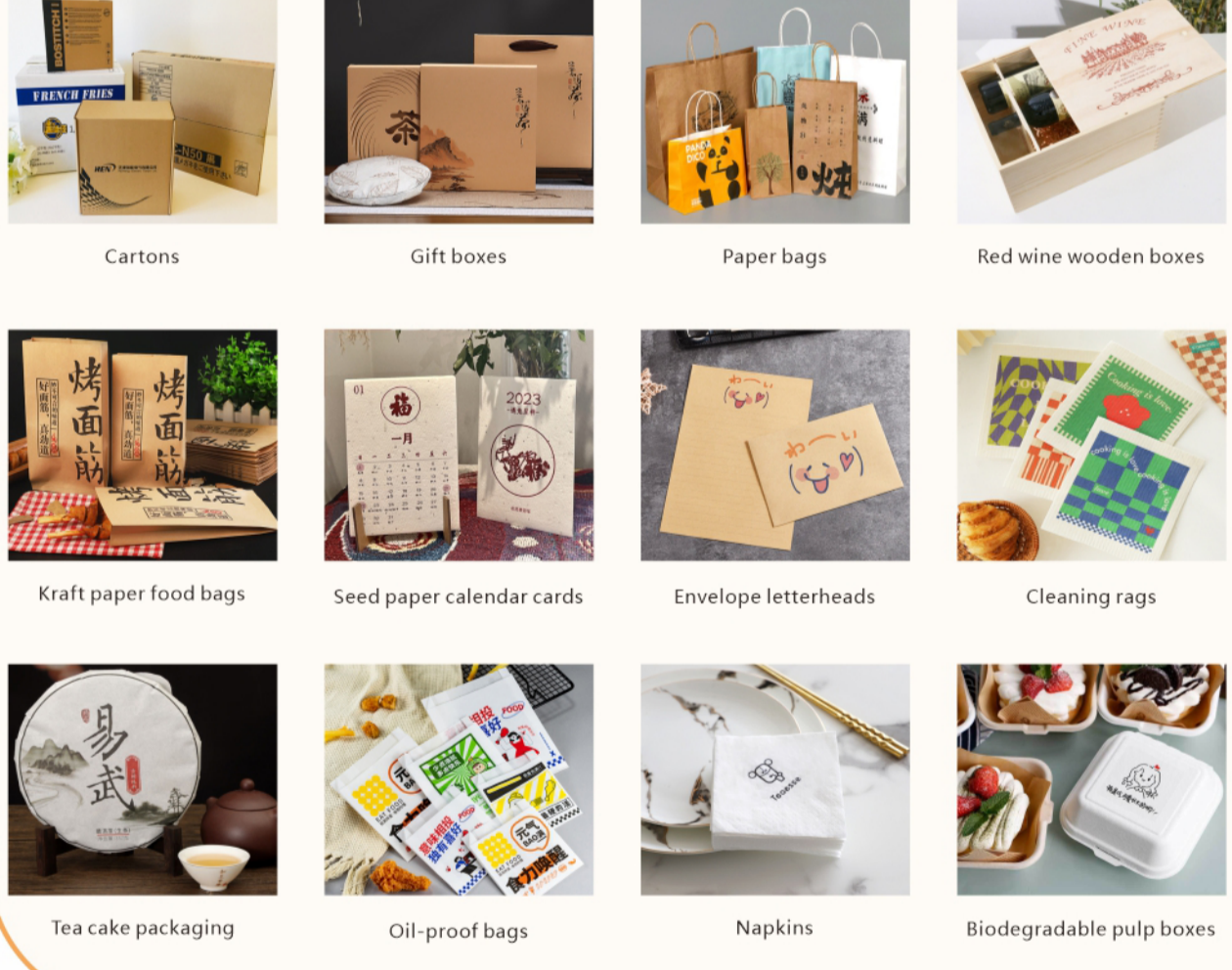
The small characters within 1 mm are clearly visible, the precision is as high as 1200dpi, and multi-color printing is not limited by color, which can achieve richer images and printing effects.

Applications

The printing media is rich and varied, suitable for various absorbent materials. Application industries include: food industry packaging, beverage industry packaging, tea industry packaging, personalized gift packaging, document packaging, daily necessities industry packaging, etc.



Sample display



Product parameters

Model number	NC-HIJ-A3	
Print head configuration	HP A3 print head*1	
Resolution	1200*1200dpi / 1200*600dpi / 1200*400dpi / 1200*300dpi	
Ink type	Water-based ink	
Ink tank capacity	CMYK	1000ml/color
Print range	Nozzle print width 297mm, unlimited length	
Printing material range	The maximum width of the material is 1000mm, the height is 450mm, and the length is not limited	
Applicable material paper	Corrugated paper, cardboard, coated paper, kraft paper and other full range of packaging surface paper	
Print thickness	450mm	
Interface type	Network cable	
Voltage	AC220V, 50HZ-60HZ	
Rated power	800W	
Print method	Color only	
Print mode	CMYK	
Printing speed	High quality, variable printing	10-20m/min
	Standard production mode	30m/min
	High speed production mode	40m/min
Print software	Nocai Print Tools	
Graphic format	PDF/TIF/JPG	
Printer dimension	L*W*H	1516mm*1605mm*1595mm
N.W.	370KG	
Packing size	L*W*H	1810mm*1760mm*1620mm
G.W.	580KG	
Working environment	Temperature	20°C-30°C
	Humidity	40%-80%(no gel)
Noise	Below 75dB	

Optional - paging machine NC-60FY

Material range: Width 90-600mm / Single width 0-10mm / Total height 0-210mm
 Separation width: 90-300mm Pagination width: 60mm Isolate length: 50-600mm
 Separation thickness: 0.02-10mm The whole machine landed: Adjust the feet
 Voltage: AC220V-50HZ (★ Must be grounded) Separation speed: 30m/min 60piece/minute

